



# Safeline Series

## ISO 6150 B GD10500 Safety-Type Quick-Release

FLUID TRANSFER  
AND HYDRAULIC

PNEUMATIC



Eaton's Safeline Series is an Industrial Interchange pneumatic coupling with push button safety feature designed for use with compressed air. Two-step disconnect procedure shuts off air supply and releases downstream air pressure before plug can be removed from socket/female, which prevents hose whip.

### Product Features

- Safe and easy to connect and disconnect
- Light weight, compact ergonomic design
- Accepts 1/4" ISO 6150 Series B and A-A-59439 plugs/males
- Accepts all US industrial plugs/males
- Standard body material: Aluminum
- Standard seal material: Buna-N

### Physical Characteristics

Body Size	Nominal Flow Diameter (mm)	Max. Operating Pressure Connected or Disconnected		Air Flow Rate* Δp 0.6 bar/8.7 psi**		Δp 1 bar/14.5 psi***		Working Temperature	
		(bar)	(psi)	(lpm)	(gpm)	(lpm)	(gpm)	°C	°F
1/4	5.5	16	232	525	139	660	174	-20° +100°	-4° +212°

\*Indicated values refer to an inlet pressure of 6 bar / 87 psi.

\*\*This flow rate allows the optimum output from a pneumatic tool.

\*\*\* This flow rate is the maximum recommended for a suitable output from a pneumatic tool. For applications needing higher flow rates, it is recommended to select a larger size coupling.

SPECIAL APPLICATIONS

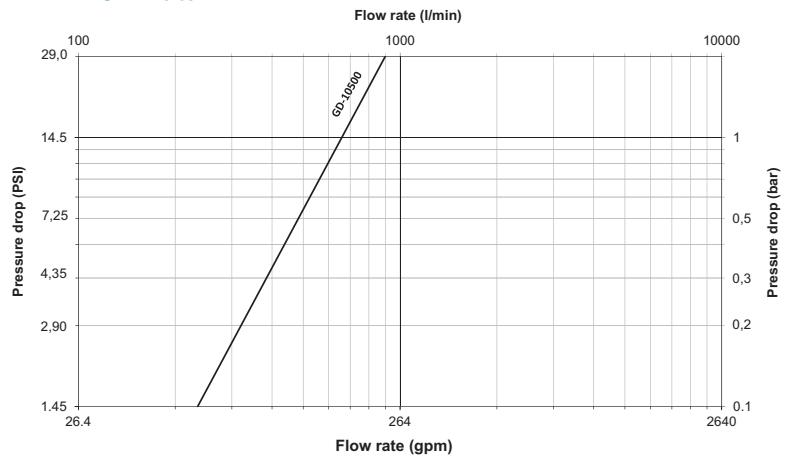
### Applications & Markets

- General Pneumatics
- Air Tools
- Industrial Plants
- Maintenance and Repair

DIAGNOSTIC

AGRICULTURE

### Flow Data

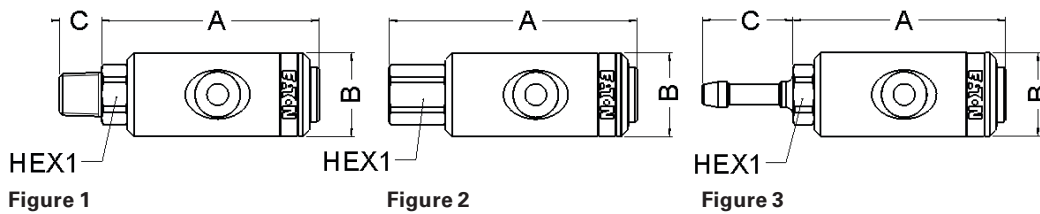


Air flow-rate at 6 bar (87 psi)

REFRIGERANT

# Safeline Series

## ISO 6150 B GD10500 Safety-Type Quick-Release



### Sockets (Female)

Part Number	Body Size	Port Size	Thread or Hose Diam.	Type	Fig.	Dimensions			Hex1 (in)	Hex2 (in)	A (mm)	B (mm)	C (mm)	Hex1 Weight		
						A (in)	B (in)	C (in)						(mm)	(lbs)	(g)
GD1053615		¼	¼	Male BSPP	1	2.57	1.02	0.47	0.75		65.3	26.0	12.0	19	0.24	110
GD1053614		¼	¼	Male BSPT	1	2.65	1.02	0.51	0.67		67.3	26.0	13.0	17	0.24	109
GD1053641		¼	¼	Male NPT	1	2.65	1.02	0.59	0.67		67.2	26.0	15.1	17	0.24	110
GD1053639		¾	¾	Male BSPP	1	2.61	1.02	0.47	0.87		66.3	26.0	12.0	22	0.27	124
GD1053638		¾	¾	Male BSPT	1	2.65	1.02	0.57	0.67		67.3	26.0	14.5	17	0.26	117
GD1053683		¾	¾	Male NPT	1	2.62	1.02	0.60	0.75		66.5	26.0	15.3	19	0.27	121
GD1053613		½	½	Male BSPP	1	2.69	1.02	0.55	1.06		68.3	26.0	14.0	27	0.33	148
GD1053612		½	½	Male BSPT	1	2.61	1.02	0.67	0.87		66.3	26.0	17.0	22	0.34	156
GD1053621		½	½	Male NPT	1	2.61	1.02	0.79	0.87		66.3	26.0	20.0	22	0.30	137
GD1052614	¼	¼	¼	Female BSPP	2	2.33	1.02	0.00	0.67		76.8	26.0		17	0.24	109
GD1052641		¼	¼	Female NPT	2	2.33	1.02	0.00	0.67		76.3	26.0		17	0.24	109
GD1052638		¾	¾	Female BSPP	2	3.14	1.02	0.00	0.87		79.8	26.0		22	0.29	132
GD1052683		¾	¾	Female NPT	2	3.08	1.02	0.00	0.87		78.3	26.0		22	0.29	132
GD1052612		½	½	Female BSPP	2	3.30	1.02	0.00	1.06		83.8	26.0		27	0.34	155
GD1052621		½	½	Female NPT	2	3.24	1.02	0.00	1.06		82.3	26.0		27	0.35	157
GD1055667		-	6 mm	Reusable Hose Fit.	3	2.59	1.02	1.10	0.67		65.8	26.0	28.0	17	0.23	106
GD1055678			7 mm	Reusable Hose Fit.	3	2.57	1.02	1.10	0.67		65.8	26.0	28.0	17	0.24	107
GD1055689			8 mm	Reusable Hose Fit.	3	2.33	1.02	1.10	0.67		65.8	26.0	28.0	17	0.24	107
GD1055690			9 mm	Reusable Hose Fit.	3	2.33	1.02	1.10	0.67		65.8	26.0	28.0	17	0.24	108
GD1055601			10 mm	Reusable Hose Fit.	3	2.33	1.02	1.10	0.67		65.8	26.0	28.0	17	0.25	112

To obtain connected length of coupling add Dimensions A or A+C (Fig. 1, 2, 3) and D or D+E (Fig. 4, 5, 6, 7, 8) together and subtract 23 mm (0,91 in).

\*Alternative end connections available upon request.

FLUID TRANSFER  
AND HYDRAULIC

PNEUMATIC

SPECIAL APPLICATIONS

DIAGNOSTIC

AGRICULTURE

REFRIGERANT

# Safeline Series

## ISO 6150 B GD10500 Safety-Type Quick-Release

FLUID TRANSFER  
AND HYDRAULIC

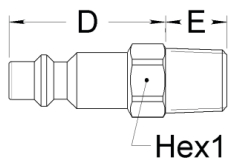


Figure 4

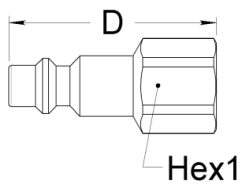


Figure 5

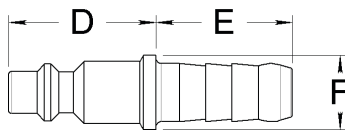


Figure 6

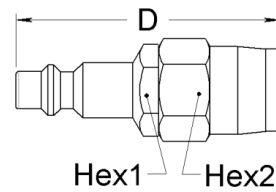


Figure 7

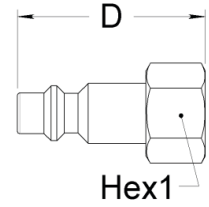


Figure 8

### Plugs (Male)

Part Number	Body Size	Port Size	Thread or Hose Diam. Type	Dimensions			Hex1 (in)	Hex2 (in)	D (mm)	E (mm)	F (mm)	Hex1 (mm)	Hex2 (mm)	Weight	
				Fig.	D (in)	E (in)								F (in)	(lbs)
GA0066318		1/8	1/8-28 Male BSPT	4	1.260	0.354	0.472		32	9		12		0.04189	19
GA0066314		1/4	1/4-19 Male BSPT	4	1.260	0.512	0.551		32	13		14		0.06	25
10		1/4	1/4-18 Male NPT	4	1.220	0.551	0.591		31	14		15		0.06	25
GA0066338		3/8	3/8-19 Male BSPT	4	1.260	0.591	0.669		32	15		17		0.08	38
GA0066345		M14	M14x125 Male Metric	4	1.260	0.512	0.551		32	13		14		0.06	26
GA0066214		1/4	1/4-19 Female BSPP	5	1.732		0.669		44			17		0.07	30
11		1/4	1/4-18 Female NPT	5	1.634		0.709		41.5			18		0.07	30
GA0066238		3/8	3/8-19 Female BSPP	5	1.732		0.827		44			21		0.08	37
GA0066245		M14	M14x125 Female Metric	5	1.732		0.669		44			17		0.06	25
GA0066248	1/4	-	M14x125 Female Metric	5	1.732		0.551		44			14		0.05	24
GA0066767		-	6mm Hose Tail	6	1.102	1.024	0.551		28	26	14			0.04	19
GA0066778		-	7mm Hose Tail	6	1.102	1.024	0.551		28	26	14			0.04	20
GA0066789		-	8mm Hose Tail	6	1.102	1.024	0.551		28	26	14			0.04	20
GA0066790		-	9mm Hose Tail	6	1.102	1.024	0.551		28	26	14			0.04	20
GA0066701		-	10mm Hose Tail	6	1.102	1.024	0.551		28	26	14			0.05	22
GA0066174		-	7x14 mm Reusable Hose Fit.	7	2.224		0.630	0.748	56.5			16	19	0.12	56
GA0066184		-	8x14 mm Reusable Hose Fit.	7	2.224		0.630	0.748	56.5			16	19	0.13	57
GA0066185		-	8x15 mm Reusable Hose Fit.	7	2.224		0.630	0.748	56.5			16	19	0.12	53
GA0066196		-	9x16 mm Reusable Hose Fit.	7	2.224		0.630	0.748	56.5			16	19	0.11	51
GA0066814		1/4	1/4-19 Female BSPP Swivel	8	1.496		0.669		38			17		0.06	26
GA0066845		M14	M14x125 Female Metric Swivel	8	1.496		0.669		38			17		0.06	26

To obtain connected length of coupling add Dimensions A or A+C (Fig. 1, 2, 3) and D or D+E (Fig. 4, 5, 6, 7, 8) together and subtract 23 mm (0,91 in).

\*Alternative end connections available upon request.

PNEUMATIC

SPECIAL APPLICATIONS

DIAGNOSTIC

AGRICULTURE

REFRIGERANT

# Safeline Series

## ISO 6150 B ID10900 Safety-Type Quick-Release



Eaton Gromelle™ ID10900 Series is a single shut-off compressed air coupling that interchanges with ISO 6150 C Standards requirements. Nominal diameter is 8 mm. Thanks to a distinct two-movement action, our couplings guarantee worker safety at disconnection by eliminating the “whiplash” effect. It is a must-have for safe air applications.

### Product Features

- One-hand push-to-connect
- Automatic button for disconnection
- Meets safety standard ISO 4414
- Single shut-off valving
- Good flow capacity
- Wide selection of end connections
- Standard seal material: NBR (Nitrile)
- Standard body material (Female): Aluminum
- Standard body material (Male): Zinc plated steel

### Physical Characteristics

Body Size	Nominal Flow Diameter (mm)	Max. Operating Pressure Connected or Disconnected		Air Flow Rate* $\Delta p$ 0.6 bar/8.7 psi**				Working Temperature	
		(bar)	(psi)	(lpm)	(gpm)	(lpm)	(gpm)	°C	°F
3/8"	8	16	232	1,590	420	2,000	528	-20° +100°	-4° +212°

\*Indicated values refer to an inlet pressure of 6 bar / 87 psi.

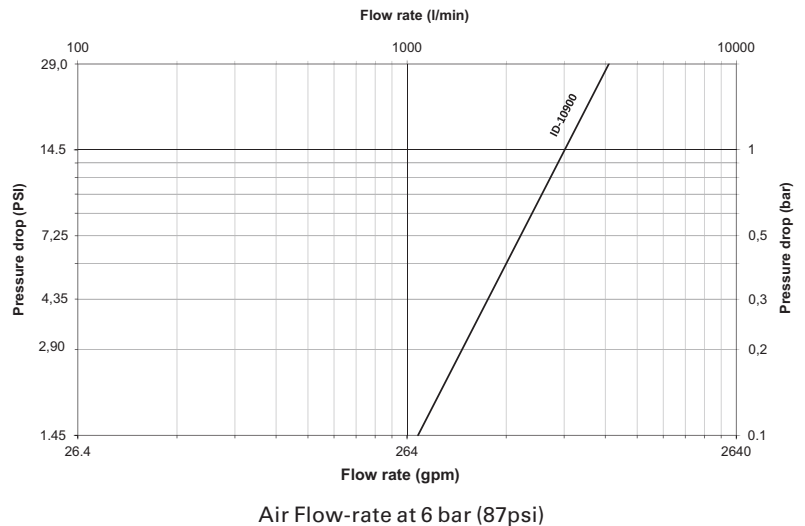
\*\*This flow rate allows the optimum output from a pneumatic tool.

\*\* This flow rate is the maximum recommended for a suitable output from a pneumatic tool. For applications needing higher flow rates, it is recommended to select a larger size coupling.

### Applications & Markets

- General Pneumatics
- Air Tools

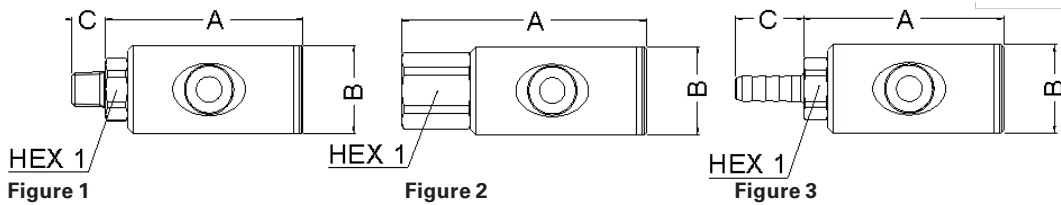
### Flow Data



# Safeline Series

## ISO 6150 B ID10900 Safety-Type Quick-Release

FLUID TRANSFER  
AND HYDRAULIC



PNEUMATIC

### Sockets (Female)

Part Number	Body Size	Port Size	Thread or Hose Diam.	Type	Fig.	Dimensions									
						A (in)	B (in)	C (in)	Hex1 (in)	A (mm)	B (mm)	C (mm)	Hex1 (mm)	Weight (lbs)	Weight (g)
ID1096015		¼	¼	Male BSPP	1	3.0	1.3	0.5	0.87	76.2	34	11.9	22	0.47	214
ID1096014		¼	¼	Male BSPT	1	3.0	1.3	0.5	0.87	76.1	34	13	22	0.47	213
ID1096041		¼	¼	Male NPT	1	3.0	1.3	0.5	0.87	76	34	13	22	0.47	213
ID1096039		⅜	⅜	Male BSPP	1	3.0	1.3	0.5	0.87	76.20	34	11.9	22	0.48	218
ID1096038		⅜	⅜	Male BSPT	1	3.0	1.3	0.6	0.87	76.1	34	15	22	0.48	219
ID1096083		⅜	⅜	Male NPT	1	3.0	1.3	0.6	0.87	76.1	34	15	22	0.48	219
ID1096013		½	½	Male BSPP	1	3.0	1.3	0.5	1.06	76.2	34	13.9	27	0.52	238
ID1096012		½	½	Male BSPT	1	3.0	1.3	0.7	0.87	76.1	34	17	22	0.51	233
ID1096021		½	½	Male NPT	1	3.0	1.3	0.7	0.87	76.1	34	17	22	0.51	233
ID1097014	⅜	¼	¼	Female BSPP	2	3.5	1.3	-	0.87	88.1	34	-	22	0.51	233
ID1097041		¼	¼	Female NPT	2	3.5	1.3	-	0.87	88.10	34	-	22	0.51	233
ID1097038		⅜	⅜	Female BSPP	2	3.6	1.3	-	0.87	90.60	34	-	22	0.51	232
ID1097083		⅜	⅜	Female NPT	2	3.6	1.3	-	0.87	90.6	34	-	22	0.51	232
ID1097012		½	½	Female BSPP	2	3.7	1.3	-	1.06	94.1	34	-	27	0.59	267
ID1097021		½	½	Female NPT	2	3.7	1.3	-	1.06	94.1	34	-	27	0.59	269
ID1095678		-	7 mm	Hose Tail	3	3.0	1.3	1.1	0.87	77.1	34	28	22	0.47	215
ID1095689		-	8 mm	Hose Tail	3	3.0	1.3	1.1	0.87	77.1	34	28	22	0.48	216
ID1095690		-	9 mm	Hose Tail	3	3.0	1.3	1.1	0.87	77.1	34	28	22	0.48	218
ID1095601		-	10 mm	Hose Tail	3	3.0	1.3	1.1	0.87	77.1	34	28	22	0.48	219

SPECIAL APPLICATIONS

To obtain connected length of coupling add dimensions A or A+C (Fig. 1, 2, 3) and D or D+E (Fig. 4, 5, 6) together and subtract 25,6 mm (1 in.).

\*Alternative end connections available upon request.

DIAGNOSTIC

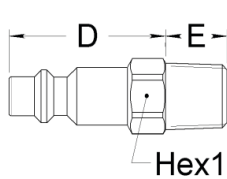


Figure 4

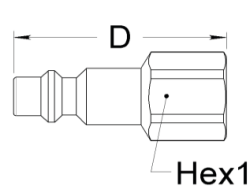


Figure 5

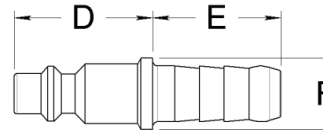


Figure 6

AGRICULTURE

### Plugs (Male)

Part Number	Body Size	Port Size	Thread or Hose Diam.	Type	Fig.	Dimensions									
						D (in)	E (in)	F (in)	Hex1 (in)	D (mm)	E (mm)	F (mm)	Hex1 (mm)	Weight (lbs)	Weight (g)
IA0090614		¼	¼	Male BSPT	4	1.34	0.51	-	0.63	34.00	13.00	-	16.00	0.07	32.00
IA0090638		⅜	⅜	Male BSPT	4	1.42	0.59	-	0.67	36.00	15.00	-	17.00	0.09	41.00
IA0090612		½	½	Male BSPT	4	1.57	0.67	-	0.91	40.00	17.00	-	23.00	0.12	56.00
IA0090714		¼	¼	Female BSPP	5	1.97	-	-	0.67	50.00	-	-	17.00	0.08	38.00
IA0090738		⅜	⅜	Female BSPP	5	1.97	-	-	0.83	50.00	-	-	21.00	0.11	49.00
IA0090712	⅜	½	½	Female BSPP	5	2.09	-	-	1.02	53.00	-	-	26.00	0.15	69.00
IA0090978		-	7 mm	Hose Tail	6	1.30	1.02	0.63	-	33.00	26.00	16.00	-	0.07	30.00
IA0090989		-	8 mm	Hose Tail	6	1.30	1.02	0.63	-	33.00	26.00	16.00	-	0.07	30.00
IA0090990		-	9 mm	Hose Tail	6	1.30	1.02	0.63	-	33.00	26.00	16.00	-	0.07	31.00
IA0090901		-	10 mm	Hose Tail	6	1.30	1.02	0.63	-	33.00	26.00	16.00	-	0.07	32.00
IA0090912		-	11-12 mm	Hose Tail	6	1.30	1.22	0.63	-	33.00	31.00	16.00	-	0.08	38.00

To obtain connected length of coupling add dimensions A or A+C (Fig. 1, 2, 3) and D or D+E (Fig. 4, 5, 6) together and subtract 25,6 mm (1 in.).

\*Alternative end connections available upon request.

REFRIGERANT

# Safeline Series

## ISO 6150 C GD18500/GK18600



Eaton's Safeline Series is an Industrial Interchange pneumatic coupling with push button safety feature designed for use with compressed air. Two-step disconnect procedure shuts off air supply and releases downstream air pressure before plug can be removed from socket/female, which prevents hose whip.

### Product Features

- Safe and easy to connect and disconnect
- Light weight, compact ergonomic design
- Meets Safety Standard ISO 4414
- Meets ISO 6150 Series C Standard
- Standard body material: Dural
- Standard seal material: Buna-N

### Physical Characteristics

Body Size	Nominal Flow Diameter (mm)	Max. Operating Pressure Connected or Disconnected		Air Flow Rate* $\Delta p$ 0.6 bar/8.7 psi**		$\Delta p$ 1 bar/14.5 psi***		Working Temperature	
		(bar)	(psi)	(lpm)	(gpm)	(lpm)	(gpm)	°C	°F
1/4	5.5	16	232	515	136	650	172	-20° +100°	-4° +212°

\*Indicated values refer to an inlet pressure of 6 bar / 87 psi.

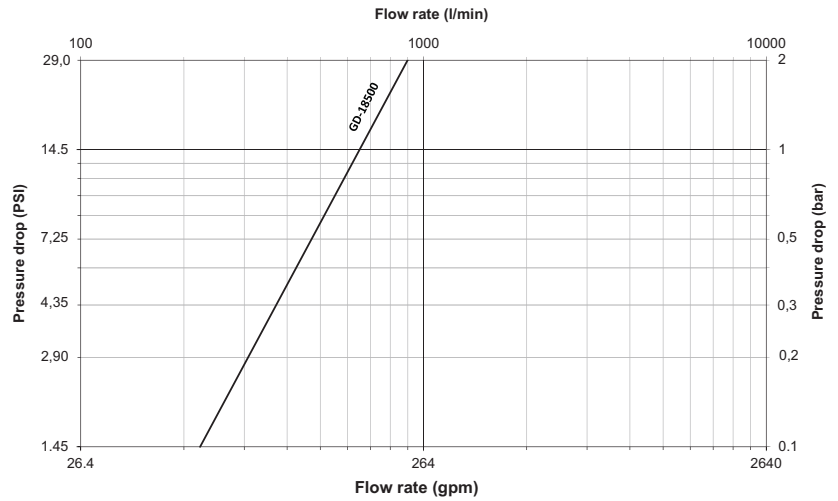
\*\*This flow rate allows the optimum output from a pneumatic tool.

\*\*\* This flow rate is the maximum recommended for a suitable output from a pneumatic tool. For applications needing higher flow rates, it is recommended to select a larger size coupling.

### Applications & Markets

- General Pneumatics
- Air Tools
- Industrial Plants
- Maintenance and Repair

### Flow Data



Air flow-rate at 6 bar (87 psi)

# Safeline Series

## ISO 6150 C GD18500/GK18600

FLUID TRANSFER AND HYDRAULIC

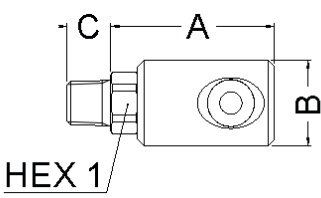


Figure 1

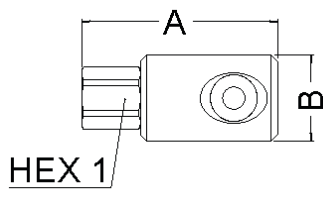


Figure 2

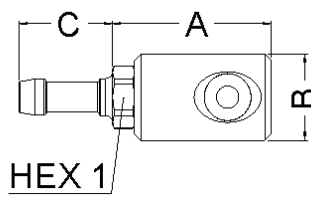


Figure 3

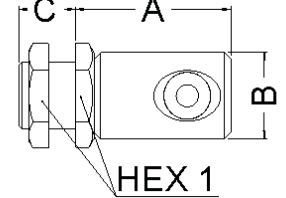


Figure 4

### Sockets (Female)

Part Number	Body Size	Port Size	Thread or Hose Diam.	Type	Fig.	Dimensions									Weight	
						A	B	C	Hex1	A	B	C	Hex1	(lbs)	(g)	
						(in)	(in)	(in)	(in)	(mm)	(mm)	(mm)	(mm)			
GD1853615		¼	¼	Male BSPP	1	1.85	1.02	0.47	0.75	47	26	12	19	0.17	77	
GD1853614		¼	¼	Male BSPT	1	1.93	1.02	0.51	0.67	49	26	13	17	0.17	76	
GD1853639		¾	¾	Male BSPP	1	1.89	1.02	0.47	0.87	48	26	12	22	0.20	91	
GD1853638		¾	¾	Male BSPT	1	1.93	1.02	0.57	0.67	49	26	14.5	17	0.19	84	
GD1853613		½	½	Male BSPP	1	1.97	1.02	0.55	1.06	50	26	14	27	0.25	115	
GD1853612		½	½	Male BSPT	1	1.89	1.02	0.67	0.87	48	26	17	22	0.27	123	
GD1852614		¼	¼	Female BSPP	2	2.30	1.02	0.67	58.5	26	-	17	0.17	76		
GD1852638	¼	¾	¾	Female BSPP	2	2.42	1.02	0.87	61.5	26	-	22	0.22	99		
GD1852612		½	½	Female BSPP	2	2.58	1.02	1.06	65.5	26	-	27	0.27	122		
GD1855667		-	6 mm	Hose Tail	3	1.87	1.02	1.10	0.67	47.5	26	28	17	0.16	73	
GD1855678		-	7 mm	Hose Tail	3	1.87	1.02	1.10	0.67	47.5	26	28	17	0.16	74	
GD1855689		-	8 mm	Hose Tail	3	1.87	1.02	1.10	0.67	47.5	26	28	17	0.16	74	
GD1855690		-	9 mm	Hose Tail	3	1.87	1.02	1.10	0.67	47.5	26	28	17	0.17	75	
GD1855601		-	10 mm	Hose Tail	3	1.87	1.02	1.10	0.67	47.5	26	28	17	0.17	79	
GD1855613		-	13 mm	Hose Tail	3	1.87	1.02	1.30	0.67	47.5	26	33	17	0.19	87	
GD1855014		¼	¼	Female BSPP, Bulkhead*	4	1.83	1.02	0.67	1.06	46.5	26	17	27	0.25	112	
GD1855038		¾	¾	Female BSPP, Bulkhead**	4	1.87	1.02	0.79	1.26	47.5	26	20	32	0.33	150	

To obtain connected length of coupling add Dimensions A or A+C (Fig. 1, 2, 3, 4) and D or D+E (Fig. 5, 6, 7) together and subtract 26 mm (1,02 in).

\*Max bulkhead thickness: 10 mm (0,39 in) / Bulkhead hole diameter = 21 mm (0,83 in).

\*\*Max bulkhead thickness: 12 mm (0,47 in) / Bulkhead hole diameter = 25 mm (0,98 in).

SPECIAL APPLICATIONS

DIAGNOSTIC

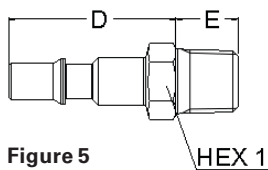


Figure 5

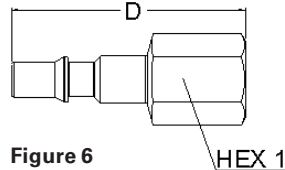


Figure 6

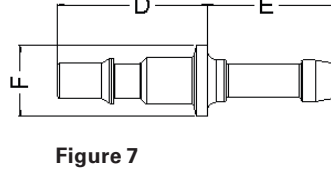


Figure 7

### Plugs (Male)

Part Number	Body Size	Port Size	Thread or Hose Diam.	Type	Fig.	Dimensions									Weight		
						D	E	F	Hex1	Hex2	D	E	F	Hex1	Hex2	(lbs)	(g)
						(in)	(in)	(in)	(in)	(in)	(mm)	(mm)	(mm)	(mm)	(mm)		
GK1866319		½	½	Male BSPP	5	1.38	0.31	0.55	35	8	14	0.04	17				
GK1866318		½	½	Male BSPT	5	1.34	0.31	0.47	34	8	12	0.03	14				
GK1866381		½	½	Male NPT	5	1.34	0.39	0.47	34	10	12	0.03	15				
GK1866315		¼	¼	Male BSPP	5	1.42	0.47	0.67	36	12	17	0.06	25				
GK1866314		¼	¼	Male BSPT	5	1.40	0.51	0.55	35.5	13	14	0.05	23				
GK1866341		¼	¼	Male NPT	5	1.42	0.59	0.67	36	15	17	0.07	30				
GK1866339		¾	¾	Male BSPP	5	1.46	0.47	0.87	37	12	22	0.09	39				
GK1866338		¾	¾	Male BSPT	5	1.48	0.47	0.75	37.5	12	19	0.08	37				
GK1866218		½	½	Female BSPP	6	1.63	0.55	41.5	14	0.04	18						
GK1866281	¼	½	½	Female NPT	6	0.00	0.00	0.04	18								
GK1866214		¼	¼	Female BSPP	6	1.97	0.67	50	17	0.07	33						
GK1866241		¼	¼	Female NPT	6	1.97	0.67	50	17	0.07	32						
GK1866238		¾	¾	Female BSPP	6	1.85	0.83	47	21	0.08	35						
GK1866245		M 14	M 14 x 125	Female Metric	6	1.87	0.67	47.5	17	0.06	26						
GK1866767		-	6 mm	Hose Tail	7	1.26	1.10	0.59	32	28	15	0.03	15				
GK1866778		-	7 mm	Hose Tail	7	1.26	1.10	0.59	32	28	15	0.04	18				
GK1866789		-	8 mm	Hose Tail	7	1.26	1.10	0.59	32	28	15	0.04	19				
GK1866790		-	9 mm	Hose Tail	7	1.26	1.10	0.59	32	28	15	0.04	19				
GK1866701		-	10 mm	Hose Tail	7	1.26	1.10	0.59	32	28	15	0.04	20				
GK1866713		-	13 mm	Hose Tail	7	1.26	1.30	0.79	32	33	20	0.08	34				

To obtain connected length of coupling add Dimensions A or A+C (Fig. 1, 2, 3, 4) and D or D+E (Fig. 5, 6, 7) together and subtract 26 mm (1,02 in).

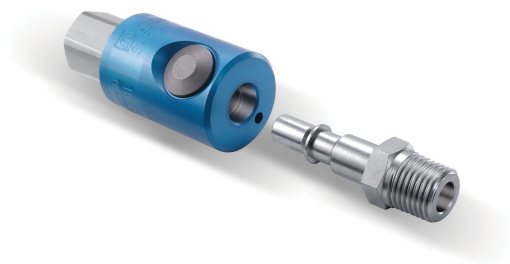
AGRICULTURE

REFRIGERANT



# Safeline Series

## ISO 6150 C ID18900/IK18900



Eaton's Safeline Series is an Industrial Interchange pneumatic coupling with push button safety feature designed for use with compressed air. Two-step disconnect procedure shuts off air supply and releases downstream air pressure before plug can be removed from socket/female, which prevents hose whip.

### Product Features

- Safe and easy to connect and disconnect
- Light weight, compact ergonomic design
- Meets Safety Standard ISO 4414
- Meets ISO 6150 Series C Standard
- Standard body material: Dural
- Standard seal material: Buna-N

### Physical Characteristics

Body Size	Nominal Flow Diameter (mm)	Max. Operating Pressure Connected or Disconnected		Air Flow Rate* Δp 0.6 bar/8.7 psi**		Air Flow Rate*** Δp 1 bar/14.5 psi***		Working Temperature	
		(bar)	(psi)	(lpm)	(gpm)	(lpm)	(gpm)	°C	°F
3/8	8	16	232	1,080	285	1,350	356	-20° +100°	-4° +212°

\*Indicated values refer to an inlet pressure of 6 bar / 87 psi.

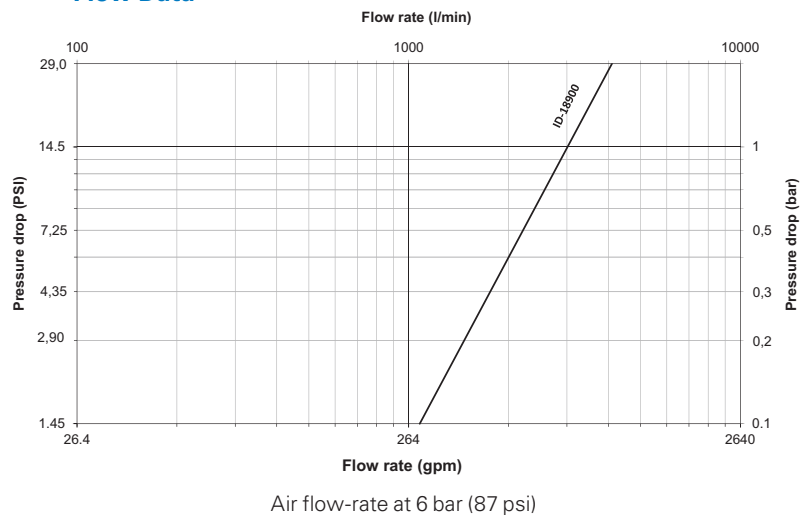
\*\*This flow rate allows the optimum output from a pneumatic tool.

\*\*\* This flow rate is the maximum recommended for a suitable output from a pneumatic tool. For applications needing higher flow rates, it is recommended to select a larger size coupling.

### Applications & Markets

- General Pneumatics
- Air Tools
- Industrial Plants
- Maintenance and Repair

### Flow Data



# Safeline Series

## ISO 6150 C ID18900/IK18900

FLUID TRANSFER  
AND HYDRAULIC

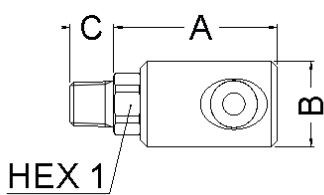


Figure 1

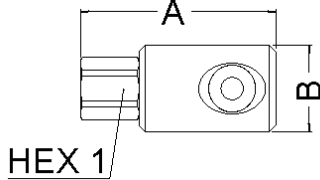


Figure 2

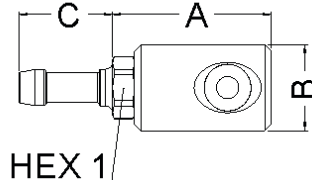


Figure 3

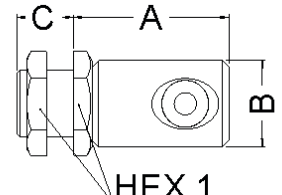


Figure 4

### Sockets (Female)

Part Number	Body Size	Port Size	Thread or Hose Diam. Type	Fig.	Dimensions										
					A (in)	B (in)	C (in)	Hex1 (in)	A (mm)	B (mm)	C (mm)	Hex1 (mm)	Weight (lbs)	Weight (g)	
ID1896015		¼	¼	Male BSPP	1	2.45	1.34	0.47	0.87	62	34	12	22	0.35	160
ID1896014		¼	¼	Male BSPT	1	2.45	1.34	0.51	0.87	62	34	13	22	0.36	162
ID1896039		⅜	⅜	Male BSPP	1	2.45	1.34	0.47	0.87	62	34	12	22	0.36	165
ID1896038		⅜	⅜	Male BSPT	1	2.45	1.34	0.59	0.87	62	34	15	22	0.37	168
ID1896013		½	½	Male BSPP	1	2.45	1.34	0.55	1.06	62	34	14	27	0.37	168
ID1896012		½	½	Male BSPT	1	2.45	1.34	0.67	0.87	62	34	17	22	0.40	180
ID1897014		¼	¼	Female BSPP	2	2.92	1.34	-	0.87	74	34	-	22	0.40	182
ID1897038	⅝	⅝	⅝	Female BSPP	2	3.02	1.34	-	0.87	77	34	-	22	0.40	180
ID1897012		½	½	Female BSPP	2	3.16	1.34	-	1.06	80	34	-	27	0.48	216
ID1895689		-	8 mm	Hose Tail	3	2.49	1.34	1.10	0.87	63	34	28	22	0.36	165
ID1895690		-	9 mm	Hose Tail	3	2.49	1.34	1.10	0.87	63	34	28	22	0.35	160
ID1895601		-	10 mm	Hose Tail	3	2.49	1.34	1.10	0.87	63	34	28	22	0.37	166
ID1895613		-	13 mm	Hose Tail	3	2.49	1.34	1.30	0.87	63	34	33	22	0.39	177
ID1895038		⅝	⅝	Female BSPP, Bulkhead*	4	2.37	1.34	0.79	1.26	60	34	20	32	0.52	235
ID1895012		½	⅝	Female BSPP, Bulkhead**	4	2.39	1.34	0.91	1.38	61	34	23	35	0.59	269

To obtain connected length of coupling add Dimensions A or A+C (Fig. 1, 2, 3, 4) and D or D+E (Fig. 5, 6, 7) together and subtract 40 mm (1,57 in).

\*Max bulkhead thickness: 12 mm (0,47 in) / Bulkhead hole diameter = 25 mm (0,98 in)

\*\*Max bulkhead thickness: 15 mm (0,59 in) / Bulkhead hole diameter = 31 mm (1,22 in)

PNEUMATIC

SPECIAL APPLICATIONS

DIAGNOSTIC

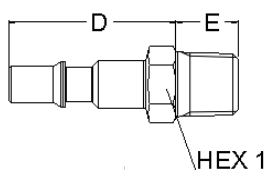


Figure 5

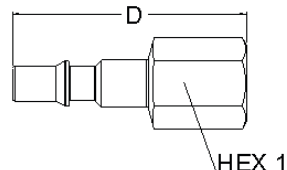


Figure 6

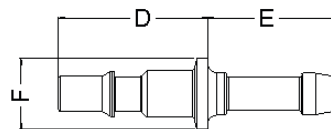


Figure 7

### Plugs (Male)

Part Number	Body Size	Port Size	Thread or Hose Diam. Type	Fig.	Dimensions										
					D (in)	E (in)	F (in)	Hex1 (in)	D (mm)	E (mm)	F (mm)	Hex1 (mm)	Weight (lbs)	Weight (g)	
IK1890615		¼	¼	Male BSPP	5	1.81	0.47	-	0.75	46	12	-	19	0.10	44
IK1890614		¼	¼	Male BSPT	5	1.77	0.51	-	0.67	45	13	-	17	0.08	38
IK1890641		¼	¼	Male NPT	5	1.77	0.51	-	0.67	45	13	-	17	0.09	39
IK1890639		⅜	⅜	Male BSPP	5	1.81	0.47	-	0.87	46	12	-	22	0.11	51
IK1890638		⅜	⅜	Male BSPT	5	1.77	0.59	-	0.75	45	15	-	19	0.11	51
IK1890683		⅜	⅜	Male NPT	5	1.77	0.59	-	0.75	45	15	-	19	0.11	52
IK1890613		½	½	Male BSPP	5	1.81	0.55	-	1.02	46	14	-	26	0.16	73
IK1890612	⅝	½	½	Male BSPT	5	1.77	0.67	-	0.87	45	17	-	22	0.15	66
IK1890714		¼	¼	Female BSPP	6	2.36	-	-	0.67	60	-	-	17	0.09	40
IK1890741		¼	¼	Female NPT	6	2.36	-	-	0.67	60	-	-	17	0.09	40
IK1890738		⅜	⅜	Female BSPP	6	2.36	-	-	0.83	60	-	-	21	0.11	52
IK1890783		⅜	⅜	Female NPT	6	2.36	-	-	0.83	60	-	-	21	0.12	55
IK1890712		½	½	Female BSPP	6	2.36	-	-	1.02	60	-	-	26	0.15	66
IK1890989		-	8 mm	Hose Tail	7	1.65	1.10	0.63	-	42	28	16	-	0.07	33
IK1890990		-	9 mm	Hose Tail	7	1.65	1.10	0.63	-	42	28	16	-	0.07	33
IK1890901		-	10 mm	Hose Tail	7	1.65	1.10	0.63	-	42	28	16	-	0.08	35
IK1890913		-	13 mm	Hose Tail	7	1.65	1.30	0.79	-	42	33	20	-	0.10	46

To obtain connected length of coupling add Dimensions A or A+C (Fig. 1, 2, 3, 4) and D or D+E (Fig. 5, 6, 7) together and subtract 40 mm (1,57 in).

AGRICULTURE

REFRIGERANT

# Safeline Series

## ISO 6150 C TD18300/TK18300



Eaton's Safeline Series is an Industrial Interchange pneumatic coupling with push button safety feature designed for use with compressed air. Two-step disconnect procedure shuts off air supply and releases downstream air pressure before plug can be removed from socket/female, which prevents hose whip.

### Product Features

- Safe and easy to connect and disconnect
- Light weight, compact ergonomic design
- Meets Safety Standard ISO 4414
- Meets ISO 6150 Series C Standard
- Standard body material: Dural
- Standard seal material: Buna-N

### Physical Characteristics

Body Size	Nominal Flow Diameter (mm)	Max. Operating Pressure Connected or Disconnected		Air Flow Rate* Δp 0.6 bar/8.7 psi**		Δp 1 bar/14.5 psi***		Working Temperature	
		(bar)	(psi)	(lpm)	(gpm)	(lpm)	(gpm)	°C	°F
½	11	16	232	2,400	634	3,000	793	-20° +100°	-4° +212°

\*Indicated values refer to an inlet pressure of 6 bar / 87 psi.

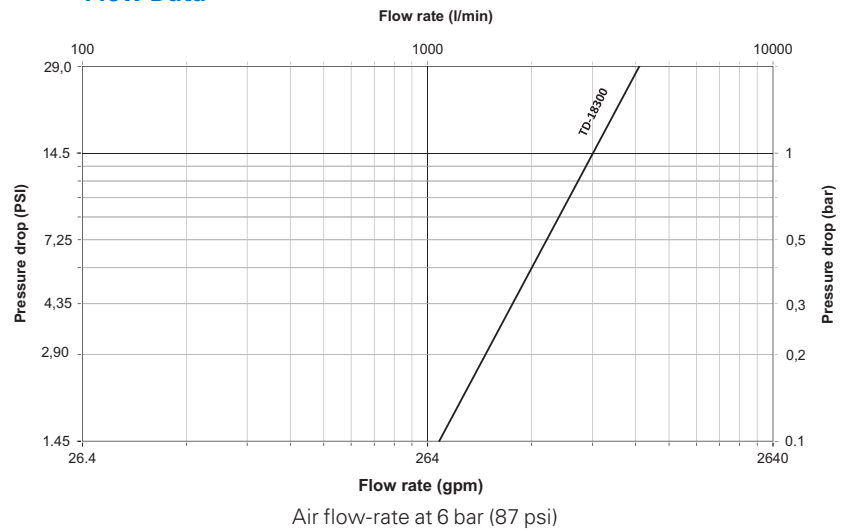
\*\*This flow rate allows the optimum output from a pneumatic tool.

\*\*\* This flow rate is the maximum recommended for a suitable output from a pneumatic tool. For applications needing higher flow rates, it is recommended to select a larger size coupling.

### Applications & Markets

- General Pneumatics
- Air Tools
- Industrial Plants
- Maintenance and Repair

### Flow Data



# Safeline Series

## ISO 6150 C TD18300/TK18300

FLUID TRANSFER  
AND HYDRAULIC

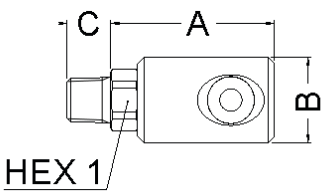


Figure 1

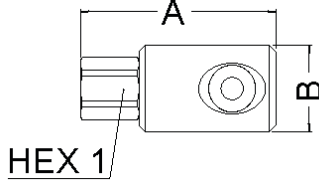


Figure 2

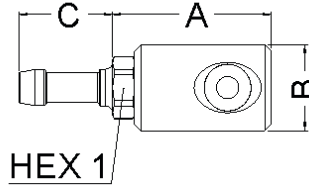


Figure 3

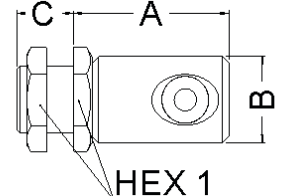


Figure 4

### Sockets (Female)

Part Number	Body Size	Port Size	Thread or Hose Diam. Type	Fig.	Dimensions					Hex1 (mm)	Hex2 (mm)	Weight (lbs)	Weight (g)			
					A (in)	B (in)	C (in)	Hex1 (in)	Hex2 (in)							
TD1832012		½	½	Male BSPT	1	2.78	1.56	0.67	1.06		70.6	39.5	17	27	0.58	262
TD1832034		¾	¾	Male BSPT	1	2.78	1.56	0.73	1.14		70.6	39.5	19	29	0.63	287
TD1832138		¾	¾	Female BSPP	2	3.27	1.56		1.06		83.1	39.5	-	27	0.62	280
TD1832112		½	½	Female BSPP	2	3.27	1.56		1.06		83.1	39.5	-	27	0.58	261
TD1832134	½	¾	¾	Female BSPP	2	3.51	1.56		1.26		89.1	39.5	-	32	0.67	304
TD1835601	-		10 mm	Hose Tail	3	2.84	1.56	1.10	1.06		72.1	39.5	28	27	0.56	256
TD1835613	-		13 mm	Hose Tail	3	2.84	1.56	1.30	1.06		72.1	39.5	33	27	0.59	267
TD1835616	-		16 mm	Hose Tail	3	2.84	1.56	1.30	1.06		72.1	39.5	33	27	0.60	270
TD1835012		½	½	Female BSPP, Bulkhead*	4	2.78	1.56	0.91	1.38		70.6	39.5	23	35	0.76	343
TD1835034		¾	¾	Female BSPP, Bulkhead**	4	2.82	1.56	0.98	1.50		71.6	39.5	25	38	0.77	350

To obtain connected length of coupling add Dimensions A or A+C (Fig. 1, 2, 3, 4) and D or D+E (Fig. 5, 6, 7) together and subtract 20 mm (0,79 in).

\*Max bulkhead thickness: 15 mm (0,59 in) / Bulkhead hole diameter = 31 mm (1,22 in)

\*\*Max bulkhead thickness: 16 mm (0,63 in) / Bulkhead hole diameter = 33 mm (1,30 in)

PNEUMATIC

SPECIAL APPLICATIONS

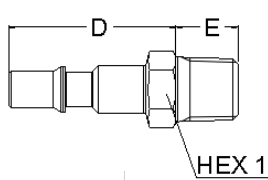


Figure 5

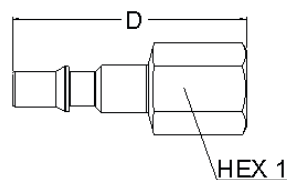


Figure 6

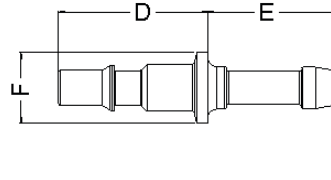


Figure 7

### Plugs (Male)

Part Number	Body Size	Port Size	Thread or Hose Diam. Type	Fig.	Dimensions			Hex1 (in)	D (mm)	E (mm)	F (mm)	Hex1 (mm)	Weight (lbs)	Weight (g)
					D (in)	E (in)	F (in)							
TK1831539		¾	¾	Male BSPP	5	2.01	0.47	0.87	51.1	11.9		22	2.32	59
TK1831512		½	½	Male BSPT	5	1.97	0.67	0.87	50	17		22	2.56	65
TK1831534		¾	¾	Male BSPT	5	2.11	0.73	1.14	53.5	18.5		29	3.86	98
TK1831638		¾	¾	Female BSPP	6	2.56		1.02	65			26	3.70	94
TK1831612	½	½	½	Female BSPP	6	2.56		1.02	65			26	3.02	77
TK1831634		¾	¾	Female BSPP	6	2.87		1.26	73			32	5.02	128
TK1831889	-		8 mm	Hose Tail	7	1.85	1.10	0.79	47	28	20		1.87	48
TK1831801	-		10 mm	Hose Tail	7	1.85	1.10	0.79	47	28	20		1.91	48
TK1831813	-		13 mm	Hose Tail	7	1.85	1.30	0.79	47	33	20		2.19	56
TK1831816	-		16 mm	Hose Tail	7	1.85	1.30	0.79	47	33	20		2.40	61

To obtain connected length of coupling add Dimensions A or A+C (Fig. 1, 2, 3, 4) and D or D+E (Fig. 5, 6, 7) together and subtract 20 mm (0,79 in).

DIAGNOSTIC

AGRICULTURE

REFRIGERANT